

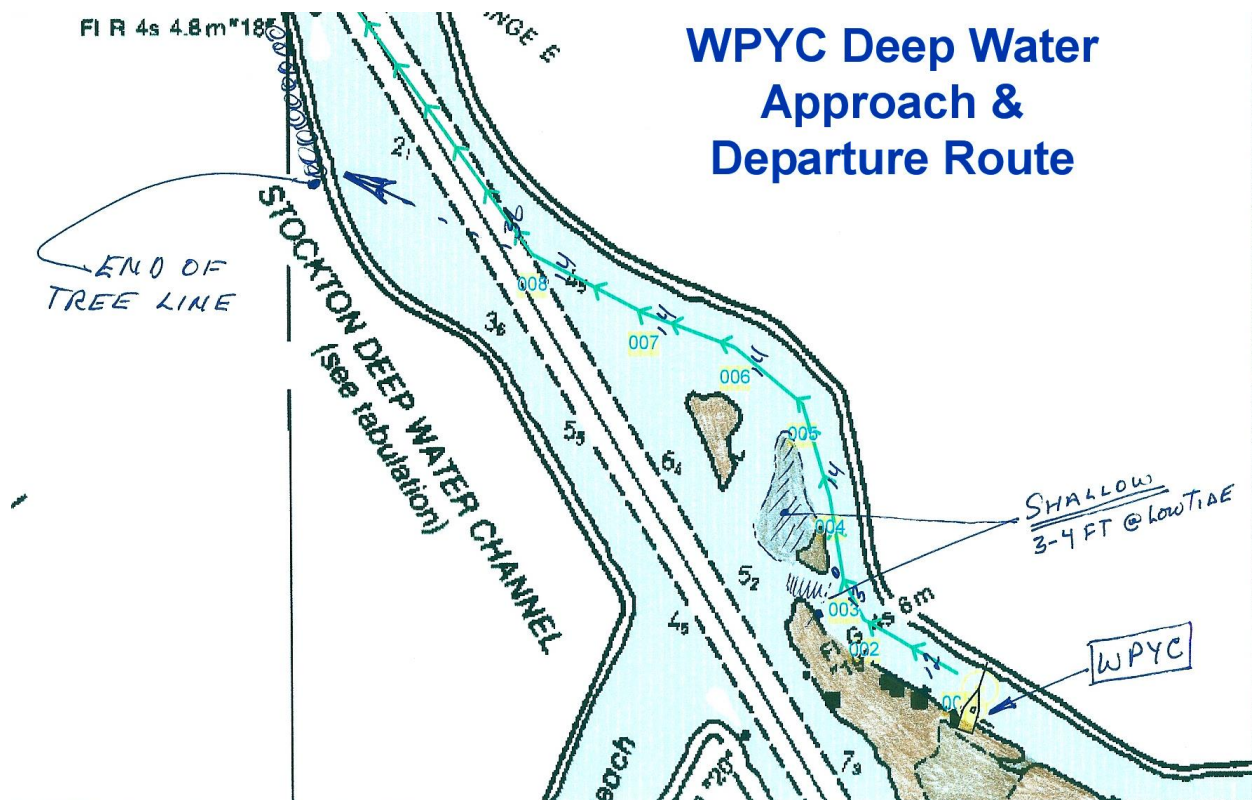
WEBER POINT YACHT CLUB

Deep Water Route when Approaching & Departing



Shoaling is taking place in the middle of the "traditional" channel that we have all used when approaching the yacht club from the west. Depths as little as 3-4 feet have been measured at low tide and one of our members had propeller damage from hitting ground. Also, due to the warm water and shallow depth, water weeds and grasses are fouling our usual path.

Using a depth sounder we explored alternate routes between the San Joaquin Deep Water Channel and the WPYC and found a relatively clean, deep path.



The "deep water" route is 12-14 ft deep at low tide and avoids the shoaled area where the "5 MPH" buoy used to be. The deeper route is almost completely free from weeds and grasses.

You should have plenty of water if you stay about 20-30 ft off the levee of the "Rindge" Tract to the north. Watch your depth sounder carefully as you transit the area.

Do not cut the corner when passing to the north of the two small islands to the west of North Spud Island (WPYC). As shown on the diagram above, it is very shallow between the two small islands.